



Wnt3 mouse mAb

Catalog No	YP-Ab-04508
Isotype	IgG
Reactivity	Transfected
Applications	WB
Gene Name	wnt3
Protein Name	
Immunogen	Purified recombinant human Wnt3 protein fragments expressed in E.coli.
Specificity	Transfected Only.
Formulation	Liquid in PBS containing 50% glycerol, 0.5% BSA and 0.02% sodium azide.
Source	Monoclonal, Mouse
Purification	The antibody was affinity-purified from mouse ascites by affinity-chromatography using epitope-specific immunogen.
Dilution	wb dilution 1:1000
Concentration	1 mg/ml
Purity	≥90%
Storage Stability	-20°C/1 year
Synonyms	Int 4;INT4;MGC131950;MGC138321;MGC138323;Proto-oncogene Int-4 homolog;Proto-oncogene Wnt-3;wingless type MMTV integration site family member 3;Wnt 3 proto oncogene protein;WNT 3 proto oncogene protein precursor;wnt3;WNT3_HUMAN.
Observed Band	40kD
Cell Pathway	Secreted, extracellular space, extracellular matrix . Secreted .
Tissue Specificity	
Function	disease:Defects in WNT3 are the cause of autosomal recessive tetra-amelia [MIM:273395]. Tetra-amelia is a rare human genetic disorder characterized by complete absence of all four limbs and other anomalies such as craniofacial, nervous system, pulmonary, skeletal and urogenital defects.,function:Ligand for members of the frizzled family of seven transmembrane receptors. Wnt-3 and Wnt-3a play distinct roles in cell-cell signaling during morphogenesis of the developing neural tube.,similarity:Belongs to the Wnt family.,subunit:Interacts with PORCN.,
Background	The WNT gene family consists of structurally related genes which encode secreted signaling proteins. These proteins have been implicated in oncogenesis and in several developmental processes, including regulation of cell fate and



patterning during embryogenesis. This gene is a member of the WNT gene family. It encodes a protein which shows 98% amino acid identity to mouse Wnt3 protein, and 84% to human WNT3A protein, another WNT gene product. The mouse studies show the requirement of Wnt3 in primary axis formation in the mouse. Studies of the gene expression suggest that this gene may play a key role in some cases of human breast, rectal, lung, and gastric cancer through activation of the WNT-beta-catenin-TCF signaling pathway. This gene is clustered with WNT15, another family member, in the chromosome 17q21 region. [provided by RefSeq, Jul 2008],

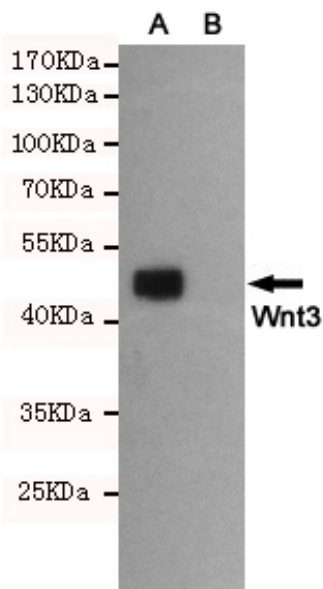
matters needing attention

Avoid repeated freezing and thawing!

Usage suggestions

This product can be used in immunological reaction related experiments. For more information, please consult technical personnel.

Products Images



Western blot detection of Wnt3 in CHO-K1 cell lysate (B) and CHO-K1 transfected by Wnt3 (A) cell lysate using Wnt3 mouse mAb (1:1000 diluted). Predicted band size: 40KDa. Observed band size: 45KDa.